



SRI VENKATESWARA COLLEGE OF ENGINEERING & TECHNOLOGY

ISO 9001:2015 Certified

(Approved by AICTE, New Delhi, Affiliated to JNTUK, Kakinada)

Office : +91 7901467802, email: principal_svcet@yahoo.com, website: www.svcet.info

STUDENT FEEDBACK ON CURRICULUM

ACADEMIC YEAR: 2021-22

1. OBJECTIVE OF FEEDBACK:

The college is affiliated to Jawaharlal Nehru Technological University, Kakinada. The syllabus finalized by the University is implemented in the affiliated colleges. The IQAC of the college identifies the curricular gaps and plans for co-curricular/extracurricular activities in college. The college obtains feedback from all the stakeholders like students, alumni, employer and teachers on curriculum/syllabus to enrich the quality of activities performed in college for improvement of the professional skills, employability and entrepreneurial skills of the students.

2. SUMMARY OF FEEDBACK OBTAINED:

| S.NO. | STAKEHOLDERS | NO. OF SAMPLE FEEDBACKS ANALYSED |
|-------|--------------|----------------------------------|
| 1 | STUDENTS | 55 |
| 2 | TEACHERS | 31 |
| 3 | ALUMNI | 18 |
| 4 | EMPLOYERS | 11 |

The feedback on curriculum was taken from the students of all years, Teachers, Alumni, and Employers at the end of each academic year.

PRINCIPAL
Sri Venkateswara College of Engineering & Technology
ETCHERLA, Srikakulam-532410 (A.P.)



SRI VENKATESWARA COLLEGE OF ENGINEERING & TECHNOLOGY

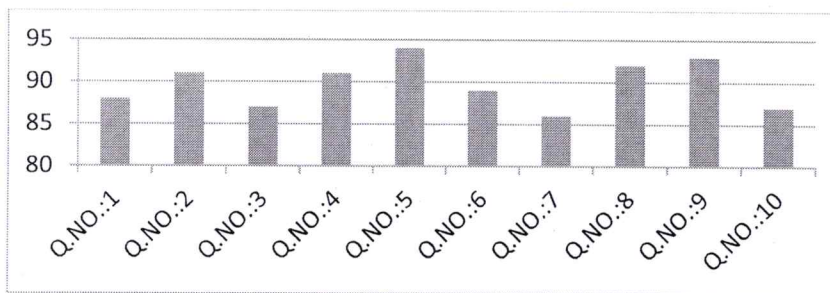
ISO 9001:2015 Certified

(Approved by AICTE, New Delhi, Affiliated to JNTUK, Kakinada)

Office : +91 7901467802, email: principal_svcet@yahoo.com, website: www.svcet.info

STUDENT FEEDBACK AND ANALYSIS ON CURRICULUM DESIGN 2021-22

| S.No. | Questionnaire | FEEDBACK |
|-------|--|----------|
| 1 | Please rate the overall effectiveness of the curriculum in meeting your educational goals. | 90% |
| 2 | How would you rate the relevance of the curriculum to your chosen field of study? | 88% |
| 3 | How would you rate the balance between theory and practical applications in the curriculum? | 91% |
| 4 | How would you rate the availability and accessibility of learning resources (e.g., textbooks, online materials, lab facilities)? | 88% |
| 5 | Please rate the effectiveness of the teaching methods used in delivering the curriculum. | 91% |
| 6 | How would you rate the inclusion of real-world applications and industry-relevant projects in the curriculum? | 89% |
| 7 | Please rate the level of student engagement and participation encouraged in the curriculum. | 90% |
| 8 | How would you rate the support and guidance provided by faculty members in understanding and navigating the curriculum? | 91% |
| 9 | Please rate the effectiveness of the assessment methods used to evaluate your learning in the curriculum. | 87% |
| 10 | How would you rate the overall satisfaction with the curriculum? | 88% |




IQAC COORDINATOR


PRINCIPAL
Sri Venkateswara College of Engineering & Technology
ETCHERLA, Srikakulam-532410 (A.P.)